

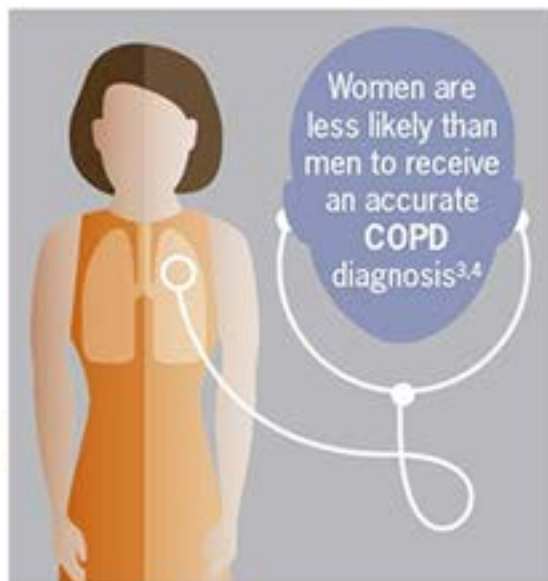
The growing burden of COPD in women



The rate of **COPD**-related deaths in women has quadrupled since 1980*¹



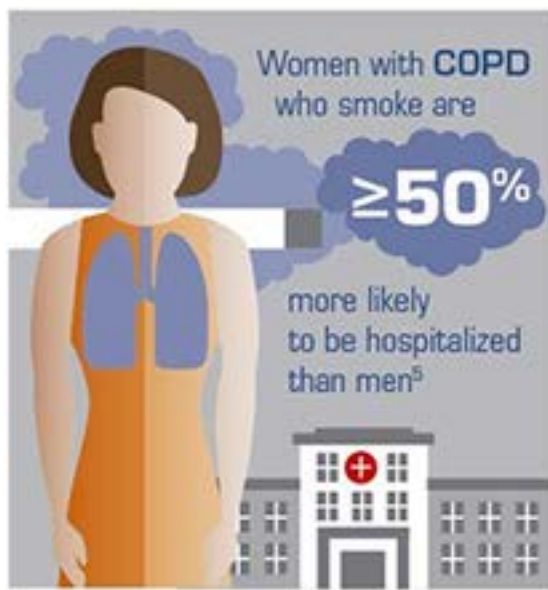
The number of new cases of **COPD** is growing nearly 3x faster in women than in men*²



Women are less likely than men to receive an accurate **COPD** diagnosis^{3,4}



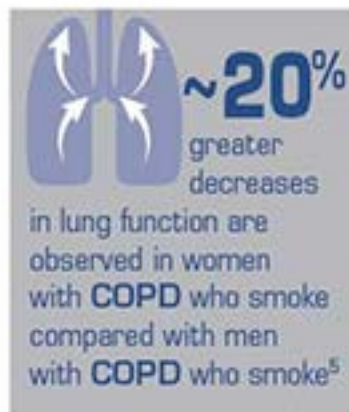
Non-smokers with **COPD** are more likely to be female⁶



Women with **COPD** who smoke are

≥50%

more likely to be hospitalized than men⁵



~20% greater decreases

in lung function are observed in women with **COPD** who smoke compared with men with **COPD** who smoke⁵



Women with **COPD** are more likely to experience anxiety or depression than men by almost⁷

4x



Women who develop **COPD** tend to be younger and have a lower socioeconomic status than men^{1,4}

Sponsored by Novartis in association with:



COPD
FOUNDATION
www.copdfoundation.org

*US data

1. Taling Her Smith-Arley: The Rise of COPD in Women. American Lung Association (available at: www.lung.org); 2. Mannino et al. NMMJ Surveill Summ 2002;11:1-16; 3. Chapman et al. Chest 2001;119:1493-5; 4. Anthoni et al. Arch Intern Med 2001;161:223-9;

5. Prescott et al. Eur Respir J 1997;10(8):222-7; 6. Sato et al. Lancet 2009;364:733-42; 7. Di Marco et al. Resp Med 2006;100:1767-74.